

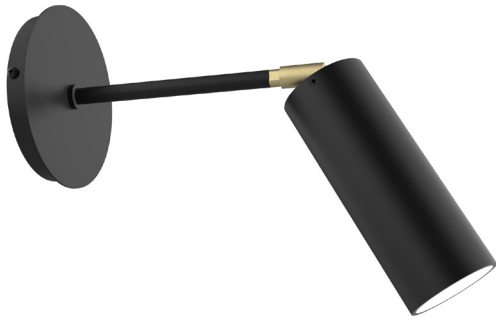


MONTCLAIR
LIGHT WORKS

Contact: 833.733.1807
MONTCLAIRLIGHTWORKS.COM
HELLO@MONTCLAIRLIGHTWORKS.COM

MARTIN 2.5" CYLINDER WALL SCONCE

SCQ440



FEATURES + BENEFITS

- Metal RLM shades are spun from heavy duty aluminum.
- Polyester powder coat finish provides color retention and scratch resistance.
- White powder coat shade interior for maximum light output.
- Dimmable with a dimmable bulb and compatible dimmer (not included).
- UL Listed for Dry Location.
- Warranty: Limited 1 Year.
- Made in USA.

SPECIFICATIONS

Product Dimensions:

Width 2.5", Shade Height 6.5", Overall Height 9", Depth 12.75", Canopy Dia.5" diameter

Lamping:

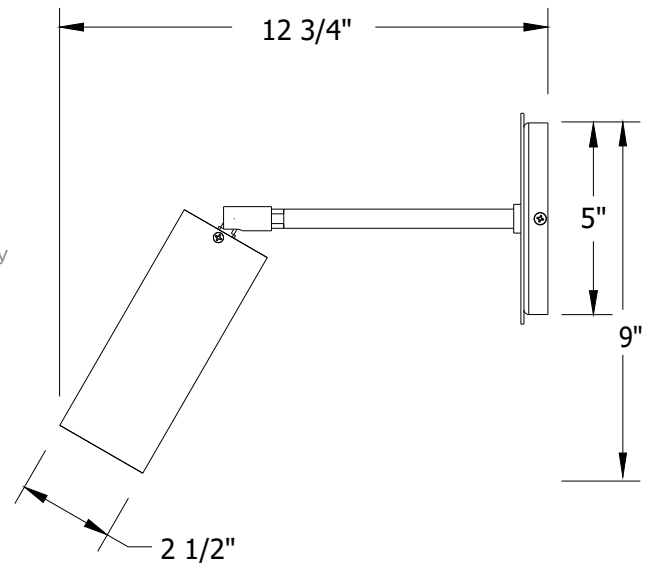
50W GU10 Base per socket

Options:

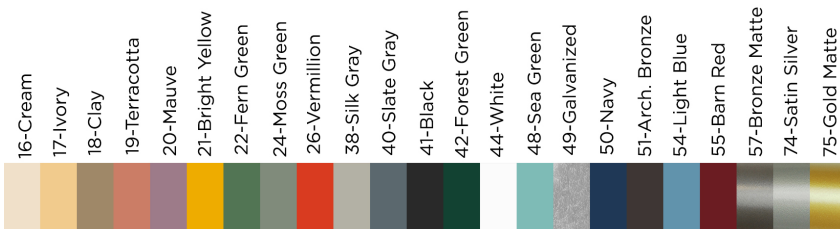
- Finish: 91-Brushed Brass hardware with Standard Finishes shown below.

Shipping:

At Montclair Light Works we proudly manufacture, assemble, and ship your lighting fixture within 3 weeks from our factory in Montclair CA.



MADE IN THE USA



JOB/LOCATION

QUANTITY

NOTES